



Steel PROFI

Steel PROFI

Izstrādātājs  
Izdošanas datums

31.08.2021

Produkts  
PR-3562.02.00.002

Preču zīme  
2021.08.181-AP 21.34.25

Materiali  
S235

Garums  
3 m

# Who we are...

Steel PROFI specializes in sheet metal processing technologies with a focus on stainless steel parts and constructions



Established: **2018**



Number of Employees: **27**



Located: **Riga, Latvia**



Production area: **2000m<sup>2</sup>**



# What we do...



## Laser-Cut

Working range:

- 3000x1500mm

Materials:

- Carbon Steel: 20mm
- Stainless Steel: 15mm
- Aluminum: 10mm



## Bending

Working range:

- Up to 3000mm length

Press force:

- 100 tons



## Welding

TIG Welding

- Capacity: 6 welders

MIG Welding

- Capacity: 2 welder

Stud-Welding

- Capacity: 1 welder



## Final assembly

Final assembly or sub-assembly can be executed based on customers needs

# Other services...

- Threading
- Riveting
- Grinding
- Pickling
- Others...

## **\* In cooperation with partners:**

- *Milling and Turning*
- *Painting*
- *Galvanizing*
- *Anodizing*
- *Other...*



# Annual Turnover



# Our customers

*We deliver to . . .*

*Latvia*

*Estonia*

*Lithuania*

*Finland*

*Sweden*

*Denmark*

*Iceland*

*We produce for . . .*

*Food industry*

*Electronics industry*

*Automotive industry*

*Construction industry*

# Certification

ISO 9001:2015

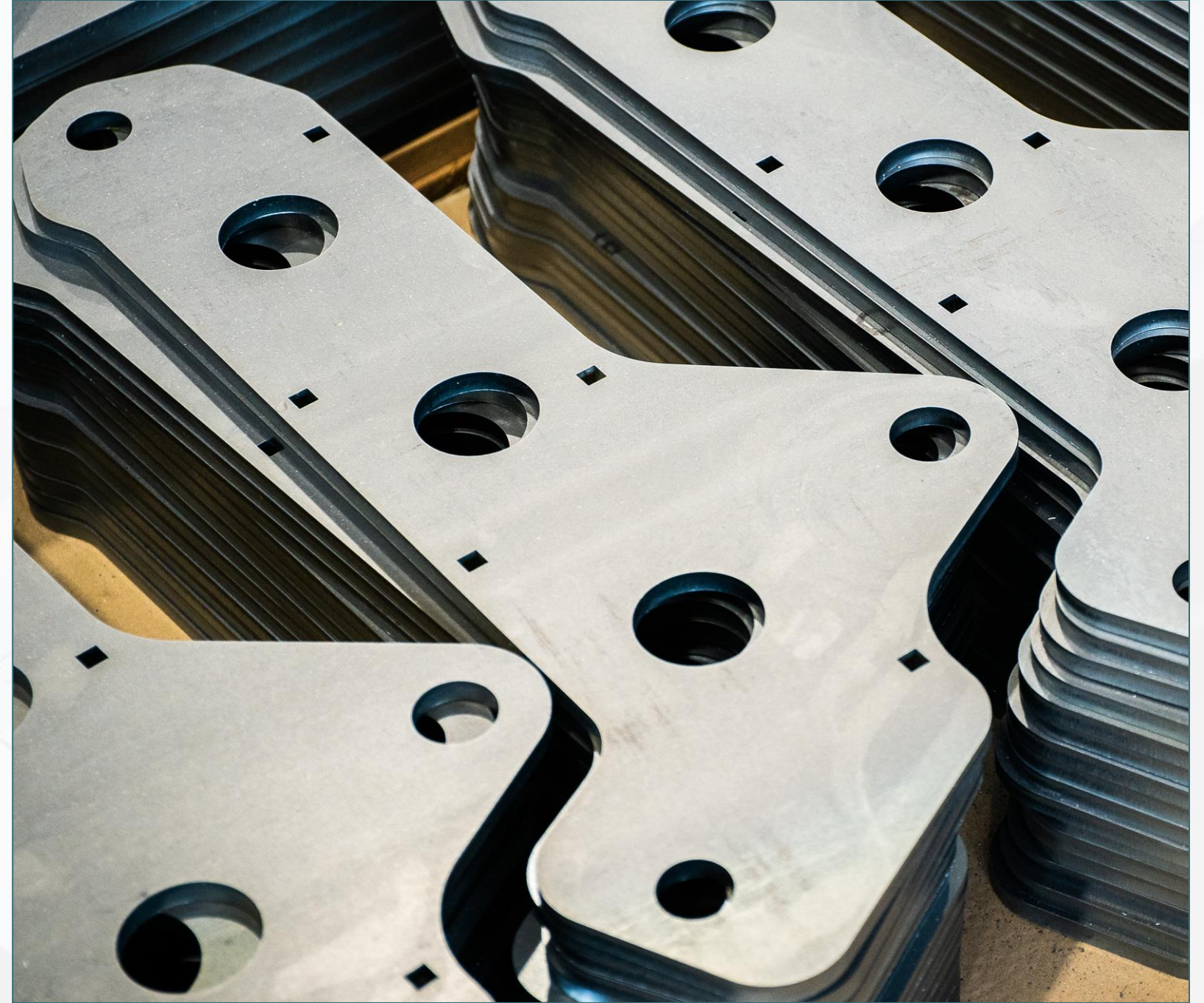
ISO 14001:2015

EN 1090-2 EXC-2

ISO 3834

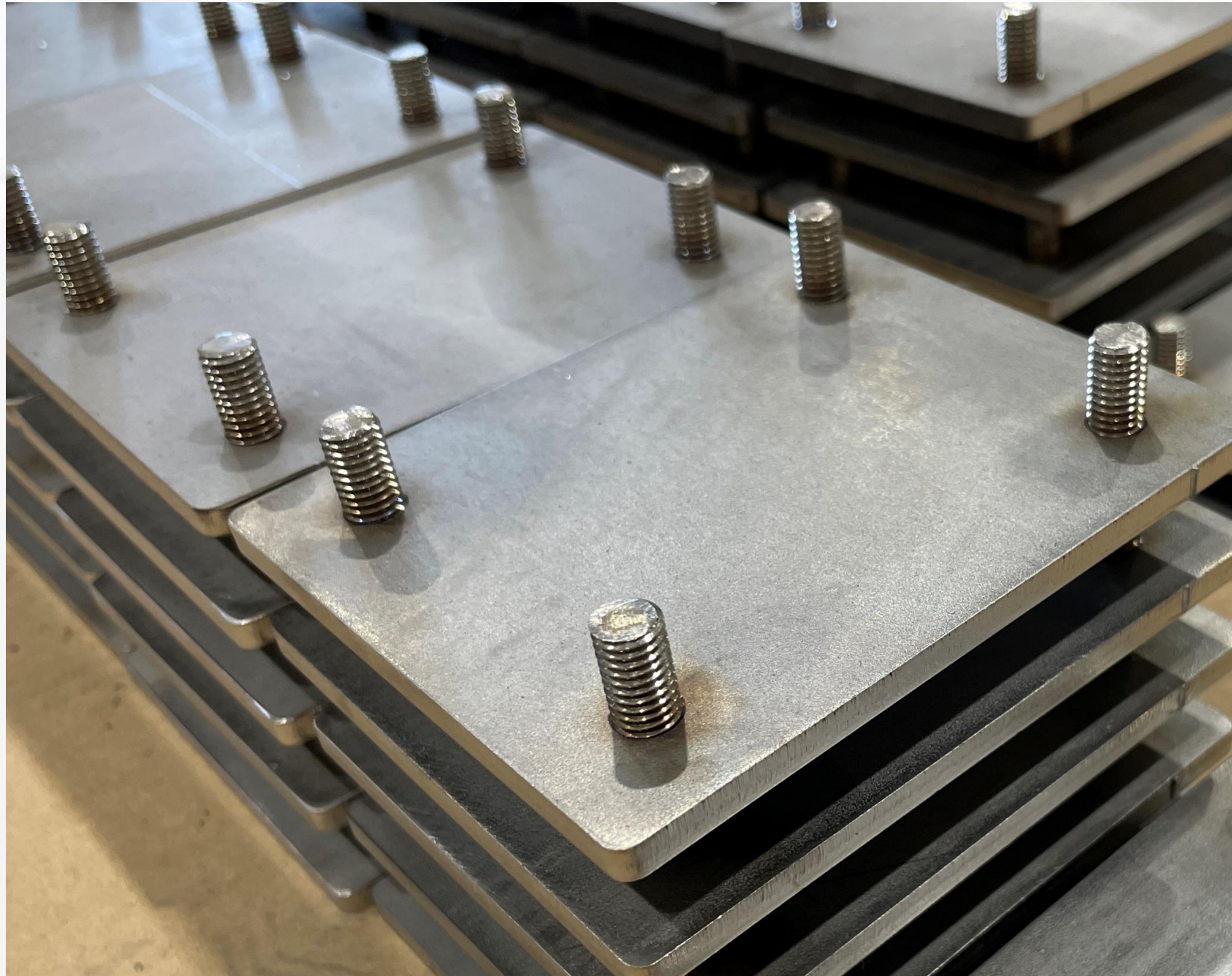


# References

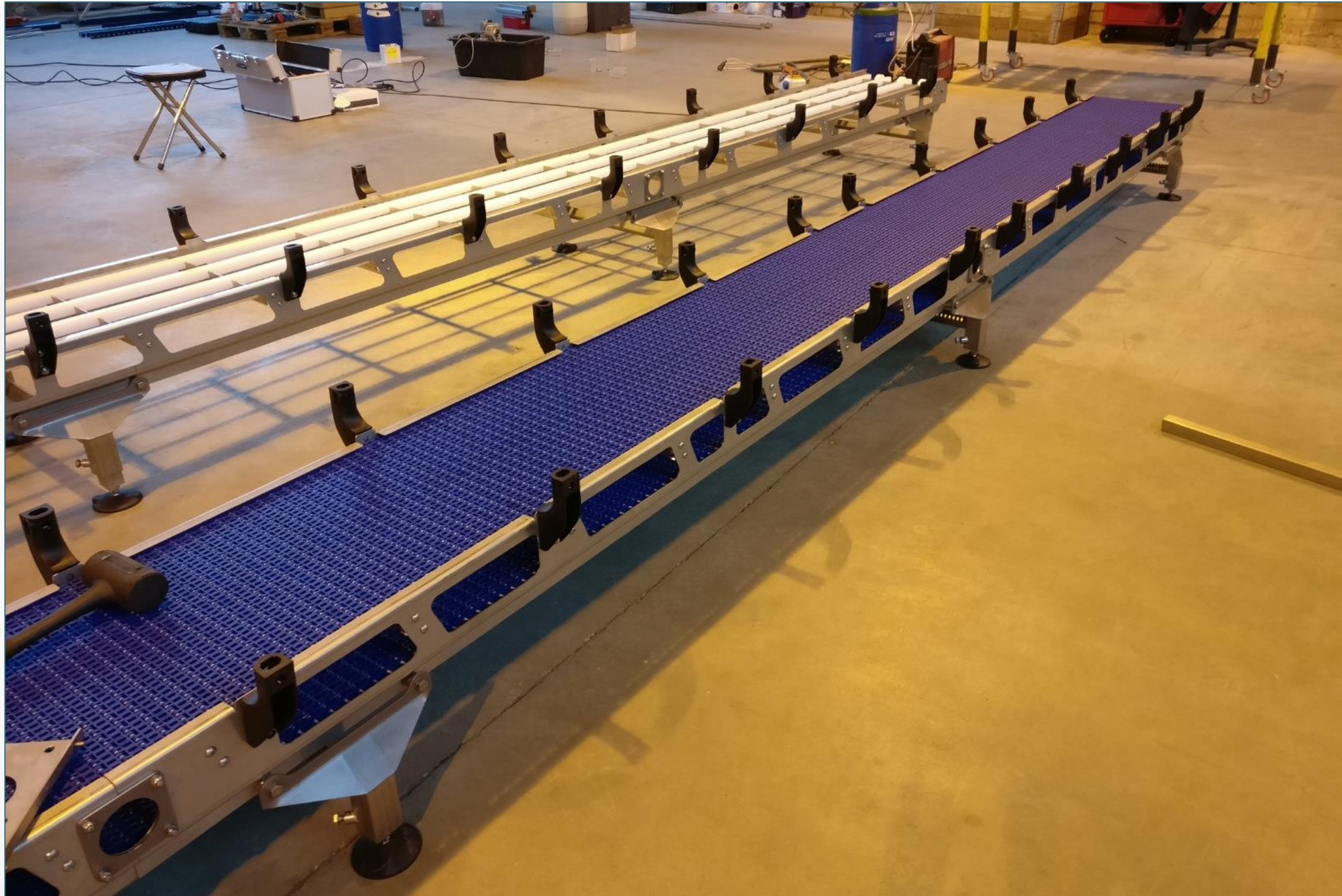




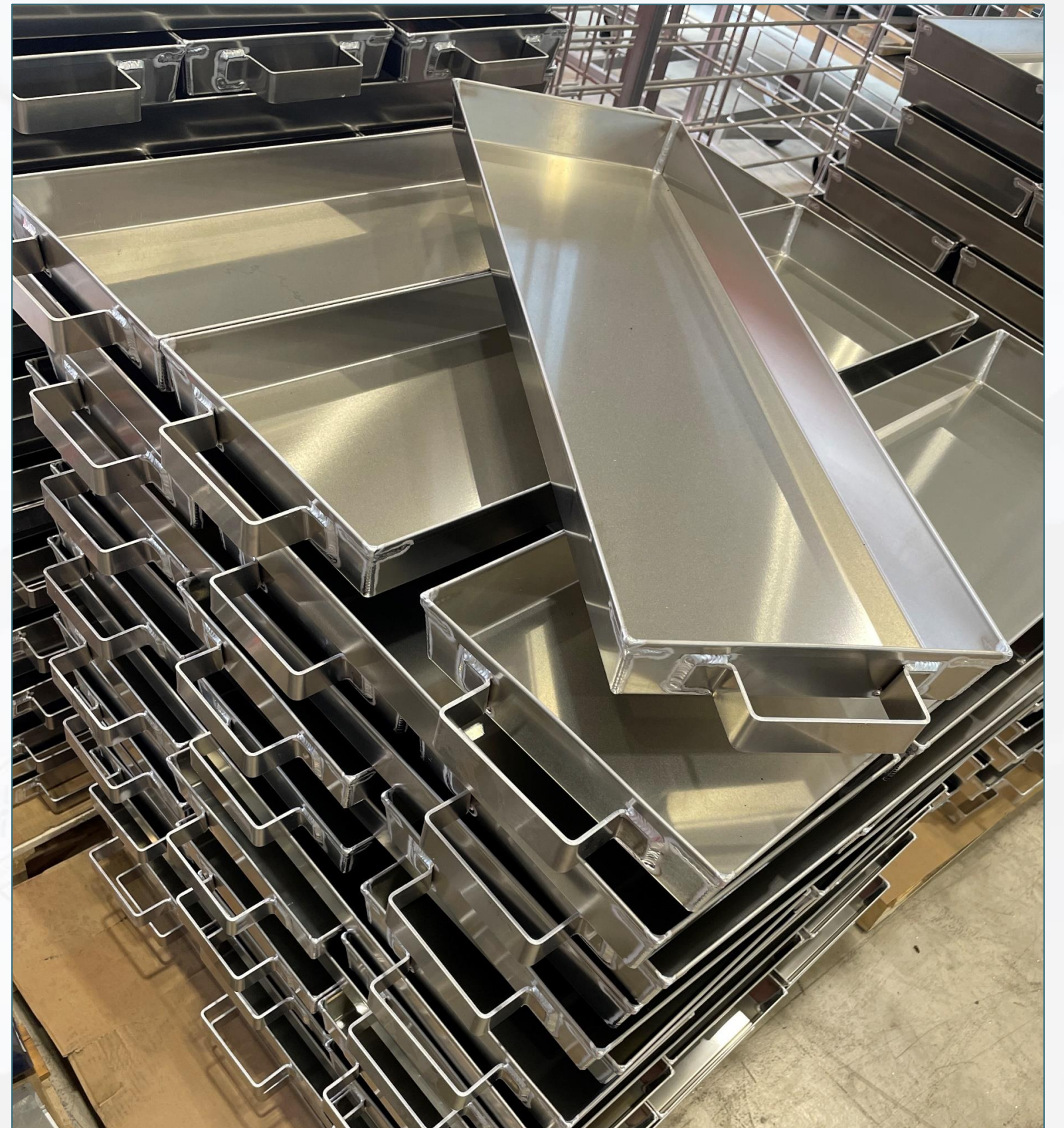
# References



# References



# References



# References



# References



# References





E-mail: [sales@steelprofi.lv](mailto:sales@steelprofi.lv)

Mobile: **+371 25 711 811**

Adress: **Piedrujas street 7, Riga, LV-1073**

[www.steelprofi.lv](http://www.steelprofi.lv)