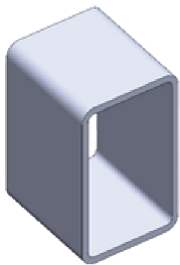


PROFILES CUTTING AND DRILLING

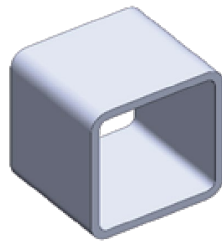
For us, precision and productivity are top priorities.

Regarding that, we are proud to have a cutting and drilling line fully automated through CNC technology allowing 24000 mm x 610 mm x 450 mm maximum material size, including:

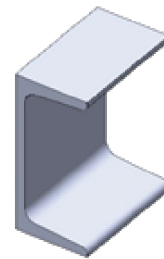
I PRODUCTION CAPACITY: 300 TON / MONTH



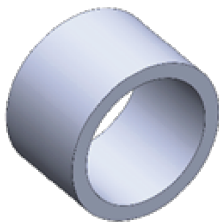
I RECTANGULAR TUBES



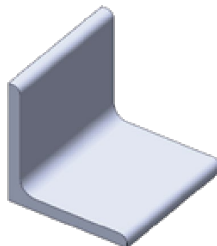
I SQUARE TUBES



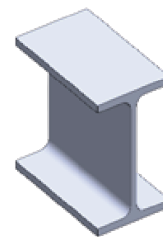
I U-PROFILES



I ROUND TUBES



I ANGLES



I I-H PROFILES



Our Ficep 601 Orient Pro machine has delivered several benefits:

- Economic solutions assuring premium quality standards
- Accuracy, versatility, and reproducibility of our products
- Easy-to-use for operators reducing the chance of errors
- Fast track cutting service