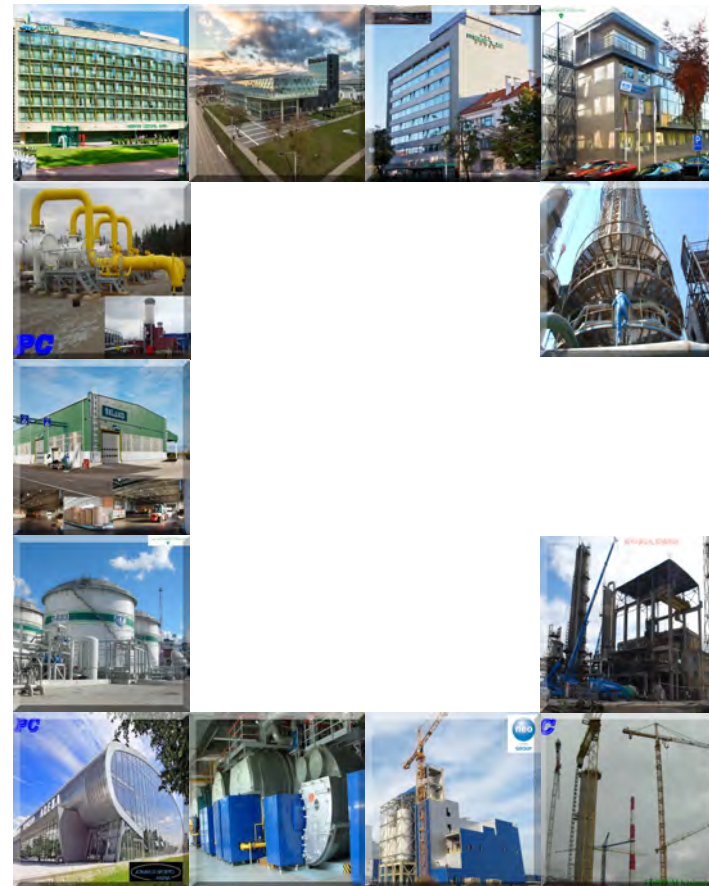
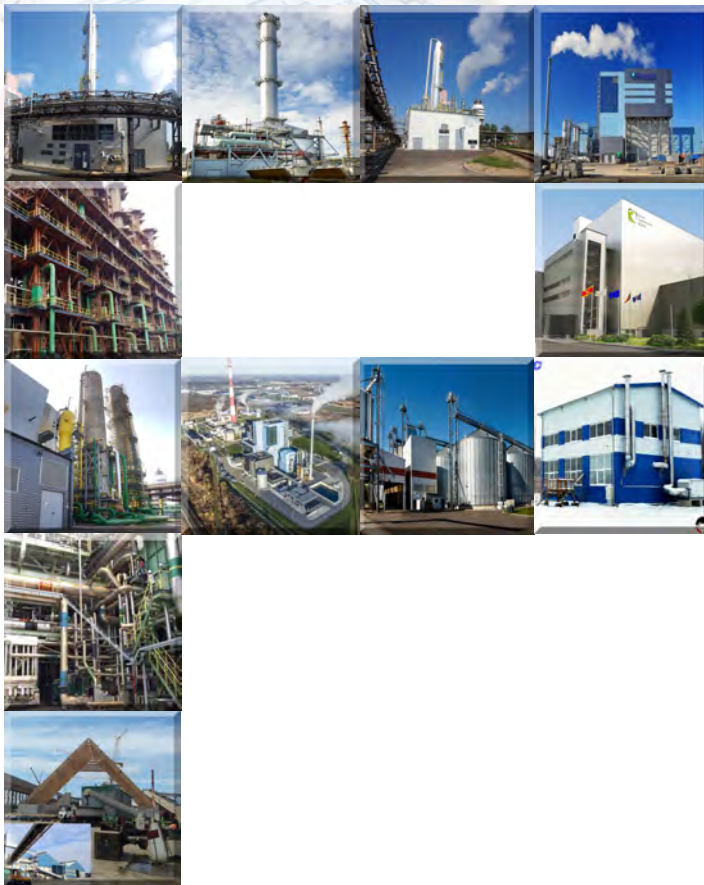
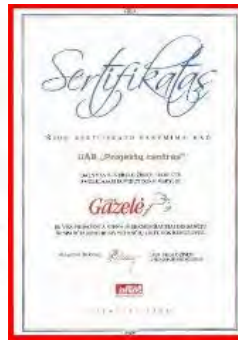


COMPANY PRESENTATION

DESIGN ENGINEERING and SUPERVISION OF DESIGN EXECUTION



COMPANY PROFILE



CJSC IREMAS Branch Projektu Centras is one of the biggest industrial design engineering and consultancy companies in Lithuania. This company is subsidiary company of the concern „ACHEMA GROUP“.

Vision – supply engineering services with higher extra value for costumers.

Mission – to seek the leader position in Engineering & Design, Construction’s technical supervision market by creating and realizing ambitious plans which suit the expectations of customers, employees and shareholders.

The main fields of activity of Projektu Centras include:

- Engineering & Design;
- Project management;
- Construction Technical supervision.

Main movements of Projektu centras:

- In 2001 the Company started its operations with a team of highly qualified and experienced professionals;
- In 2005 CJSC Projektu Centras acquired CJSC Energetiniu Projektu Centras, a company well-known in the market of engineering & design services since 2001;
- In 2007 and 2008 CJSC Projektu Centras was acknowledged as one of the most successfully operating and rapidly developing companies Lithuania in the Gazele project of Verslo Zinios;
- At the end of 2007 CJSC Energetiniu projektų centras was successfully joined to our company;
- At the end of 2007 we established the construction division for maximum satisfaction of our clients’ needs;
- In 2009 CJSC Projektu Centras was acknowledged the most successful operating and rapidly developing company in the Gazele project of Verslo Zinios;
- In 2015 Projektu Centras became a part of company CJSC “IREMAS”.

COMPANY PROFILE

The integrated quality, environment and professional safety and health management system according to the requirements of international standards ISO 9001:2015, ISO 14001:2015, OHSAS 18001:2007 has been implemented at Projektu centras.

Currently the Company employs about 50 top level specialists:

- Designers – 40 (30 certified);
- Project management – 6 persons;
- Technical supervision team – 4 (all certified).

In our company we all seek that Client would be satisfied with our company services from the very first meeting to the presentation of keys.



Projektu centras supplies services in business to business market. Our areas of expertise cover:

- Consultancy;
- Strategic planning;
- Technical consultations;
- Studies and design engineering projects;
 - Investment promotion;
- Integrated projects management;
 - Audits and evaluations.



COMPANY CONTACTS

We would be pleased to answer all the questions You may have and to provide the information of Your interest. We are here to search for mutually beneficial and optimal solutions.

You will find more information about our activities, pending and completed projects in the Company's website:

www.projektucentras.lt and <https://www.linkedin.com/in/projektucentras/>

We look forward for successful and long-term cooperation, which would help you to realize the most difficult decisions in easier way!

CJSC IREMAS Branch Projektu Centras

Vytauto pr. 29, Kaunas

LT-44352, Lithuania

Tel.: +370 37 409 087

Fax: +370 37 322 433

E-mail: info@projektucentras.lt

ENGINEERING & DESIGN ACTIVITY

MAIN INDUSTRIAL PLANTS projects

PET production plant in Klaipėda LEZ

Customer: CJSC “NEO Group”

Completed operations:

Technical design; Detail design; As Built

Capacity of PET production:

168 000 tons per year.

Site area: 9,9 Ha and 5,4 Ha.

Storage: 10889 m²

Plant buildings: 9960 and 9942 m².

Height: 49 m.

Completion date: 2018



ENGINEERING & DESIGN ACTIVITY MAIN INDUSTRIAL PLANTS projects

FORMALINE production plant

Customer: JSC „ACHEMA“

Completed operations: Technical design; Detail design; As Built

Capacity of formaline production: 100 000 tons per year.

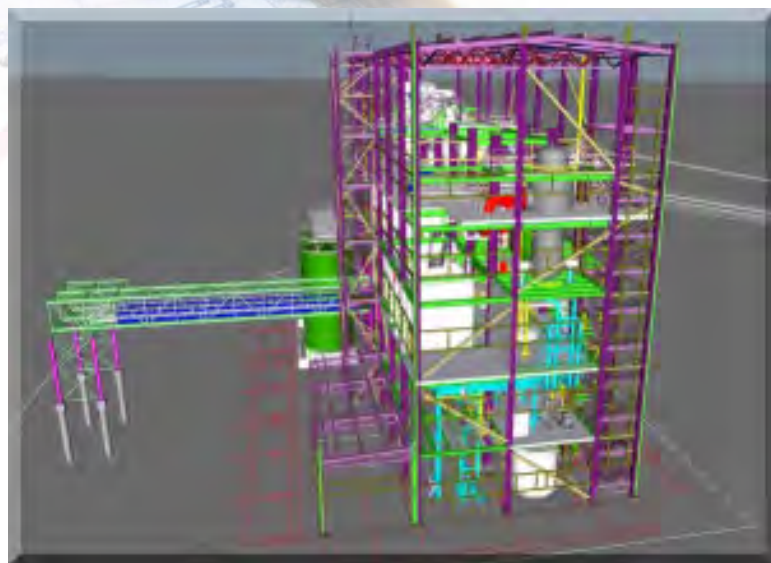
Absorber height: 37 m.

Storage tanks: 32 m³; 200 m³; 700 m³.

Completion date: 2018



ENGINEERING & DESIGN ACTIVITY MAIN INDUSTRIAL PLANTS projects



UP production plant

Customer: JSC "LIFOSA" (EUROCHEM)

Completed operations: Technical; Detail design

Capacity of urea phosphate production: 25 000 tons per year.

Building: 1865 m².

Completion date: 2018

ENGINEERING & DESIGN ACTIVITY MAIN INDUSTRIAL PLANTS projects

Plant of MAP (fertilizers) production

Customer: JSC “LIFOSA” (EUROCHEM)

Completed operations: Technical Detail design

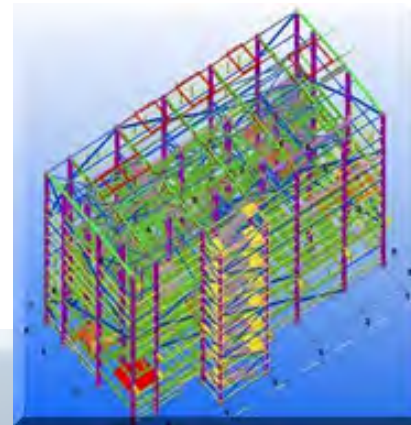
Capacity of MAP production: 5 tons per hour.

Plant was installed in existing LIFOSA factory between functioning factory infrastructure.

The highest structure is 35 m from the ground level.

Completion date:

Technical Detail design 2016



ENGINEERING & DESIGN ACTIVITY

MAIN INDUSTRIAL PLANTS projects

Plant of CAN, AN, CAN+S (fertilizers) production

Customer: JSC “ACHEMA”

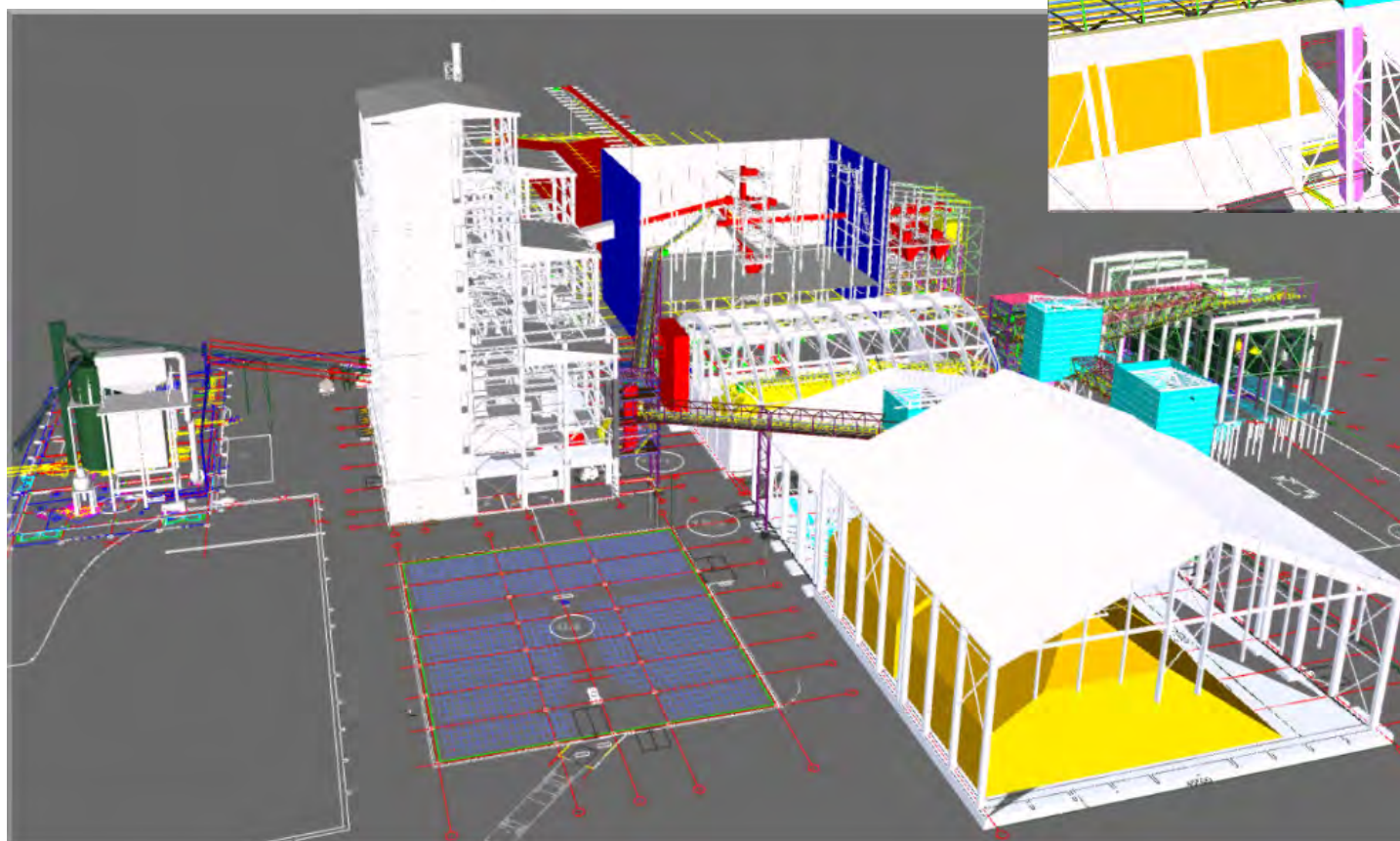
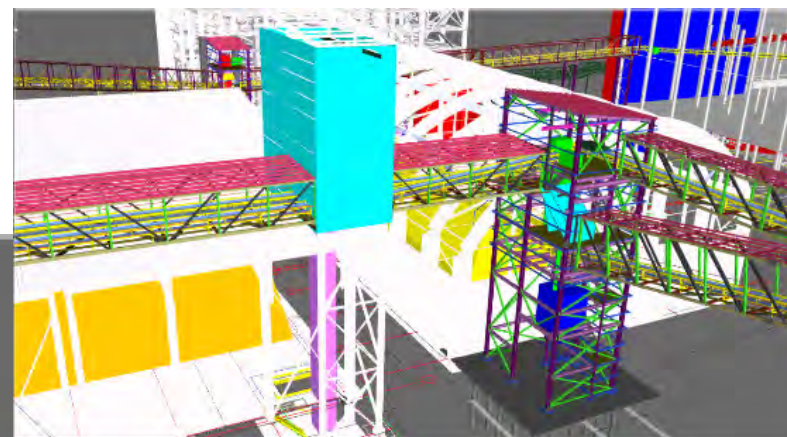
Completed operations: Technical design

CAN, AN, ASN production: 180 000 tons per year.

Storage: 6000 t (CSAN/CAN); 6000 t ASN; 3000 t AN.

Completion date:

Technical design 2018



ENGINEERING & DESIGN ACTIVITY MAIN INDUSTRIAL PLANTS projects

Nitric acid production plant GP2 relocation from Romania

Customer: JSC “ACHEMA”

Completed operations: Technical design and Detail design

Capacity of Nitric acid production: 550 tons per day

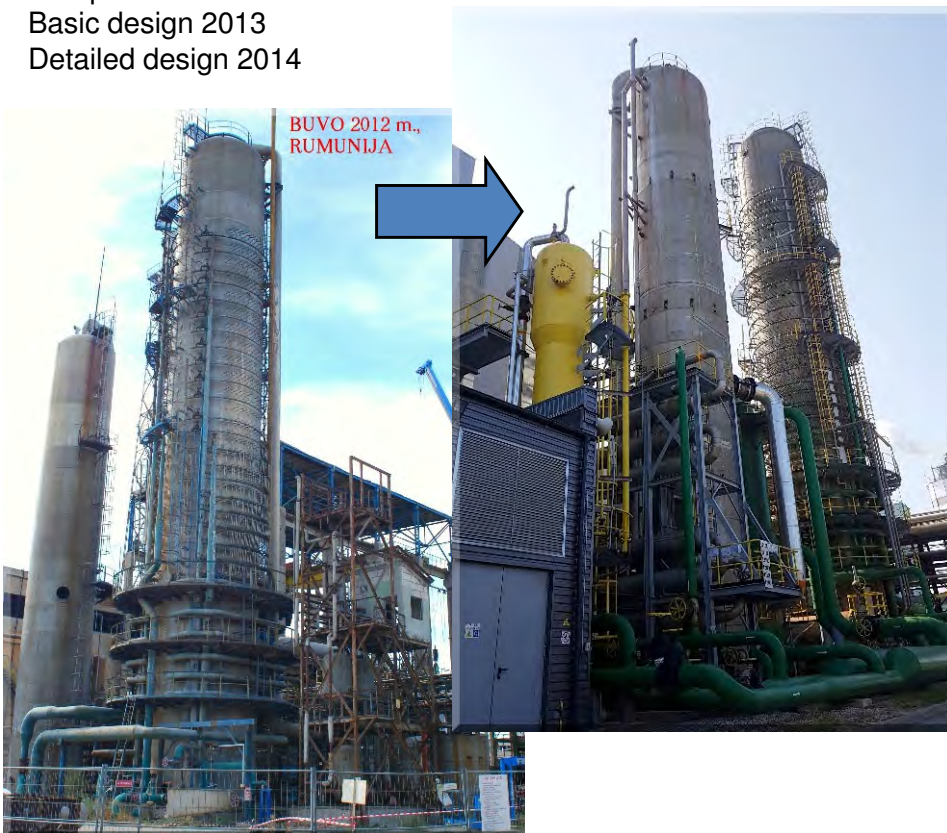
Plant was installed in existing Achema factory between functioning factory infrastructure.

The highest structure is 126 m from the ground level

Completion date:

Basic design 2013

Detailed design 2014



ENGINEERING & DESIGN ACTIVITY MAIN INDUSTRIAL PLANTS projects

Passengers and cargo terminal with supra all the facilities

Customer: JSC “Centrinis Klaipėdos terminalas”

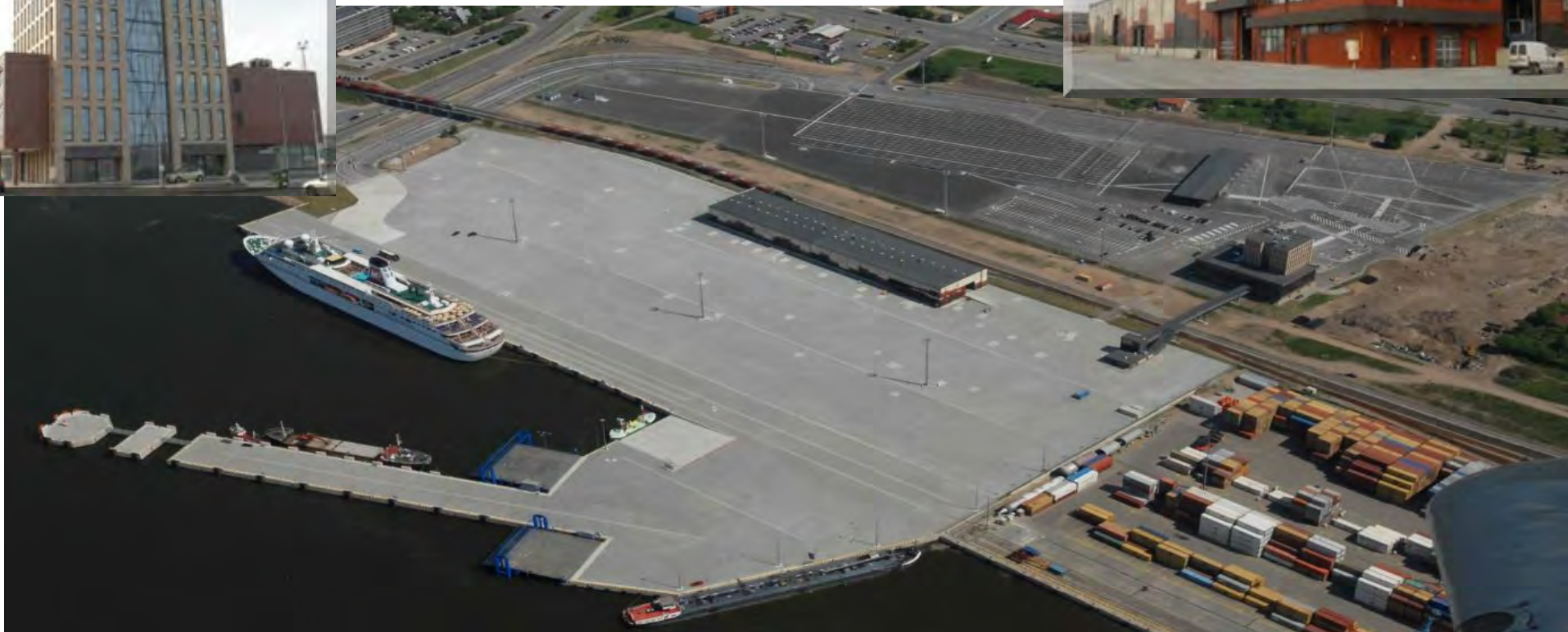
Completed operations: Technical design and Detail design

Completion date:

Technical design 2012

Detailed design 2013

- annual number of passengers - 250.000 passengers
- annual quantity of general cargoes - 200.000 t
- annual quantity of cars - about 100.000-180.000 units
- annual quantity of truck-trailers - 150.000-220.000 units
- annual rail freight cargo volumes (Ro-Ro type) - 230.000 t
- number of docks for ships per 24 hours – up to 9 pcs.



ENGINEERING & DESIGN ACTIVITY MAIN INDUSTRIAL PLANTS projects

Bulk fertilizer storage

Customer: JSC “KLASCO”

Completed operations: Technical and Detail design

Warehouse capacity: 80.000 tons Bulk fertilizer

Railwagon discharge station 1.800 t/hour

Ship loading capacity 1.500 t/hour

Completion date:

Basic design 2012

Detailed design 2015



ENGINEERING & DESIGN ACTIVITY

MAIN POWER PLANTS projects

Cogeneration (WtE) Power Plant in Kaunas LEZ

Customer: Kauno kogeneracinė jėgainė

Owner: FORTUM / JSC Lietuvos Energija

Completed operations: Technical and Detail design

Electrical power ~ 24 MWe.

Heat power ~ 70 MW.

Completion date:

Technical design 2018 (second edition)

Detailed design 2019



ENGINEERING & DESIGN ACTIVITY MAIN POWER PLANTS projects

Biofuel plant and steam Boiler plant, Elektrėnai

Customer: JSC Kauno Energetikos remontas

Owner: JSC Lietuvos Energijos Gamyba

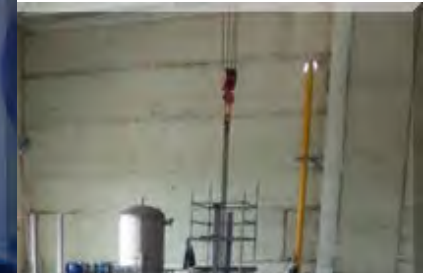
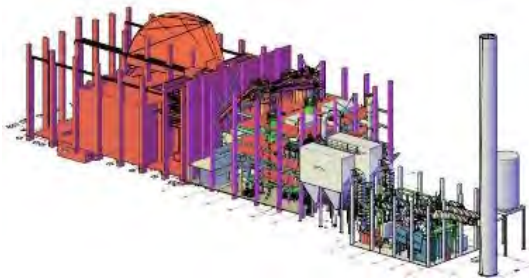
Completed operations: Technical and Detail design

The biofuel plant concept consists of 2*20 MW biofuel boilers.
Steam plant – 3*16,5 MW Steam boilers.

Completion date:

Technical design 2012

Detailed design 2014

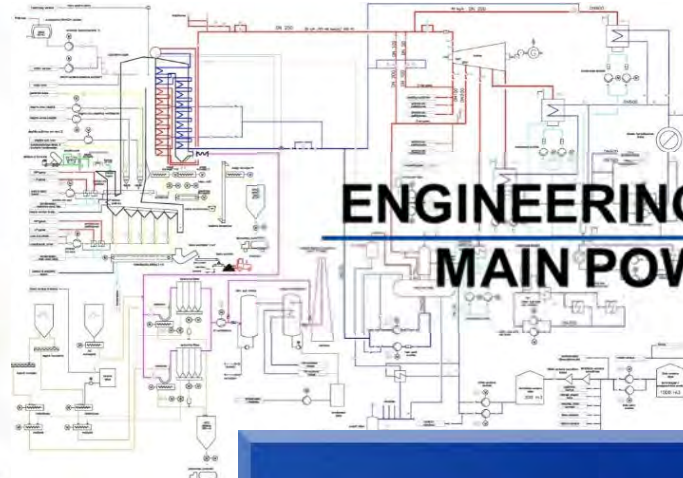


**Lietuvos
energija** GAMYBA

Biokuro katilinė, Elektrėnai

ENGINEERING & DESIGN ACTIVITY

MAIN POWER PLANTS projects



Biofuel and waste burning CHP plant, Klaipėda

Customer: CJSC AF-Enprima (Finland)

Owner: CJSC Fortum Klaipėda

Completed operations: Technical design (2010)

Completed operations: Detail design (2012)

The power plant concept consists of 85 MW fuel-power grate boiler plant and 20 MWe steam turbine generator plant.

The plant will produce 63 MWth heat (with flue gas condensing) and 17.0 MWe. electricity (net).



ENGINEERING & DESIGN ACTIVITY

MAIN POWER PLANTS projects

Cogeneration power station No 2

Customer: JSC “ACHEMA”

Completed operations: Technical and Detail design

Capacity of power station:

Electrical power: 41 MWe

Heat power: 62 MW

Completion date: 2009

Main 45 bar steam pipeline

Network length – 430 m

Pressure – 45 bar; Temperature - 463 ° C

Pipe diameter – DN250



ENGINEERING & DESIGN ACTIVITY

MAIN POWER PLANTS projects

GAS compressing Station JAUNIUNAI

Completed operations:
Technical and Detail design
(Gasification and process control parts (2010)
Natural Gas



Cogeneration station, Kaunas district., Domeikava

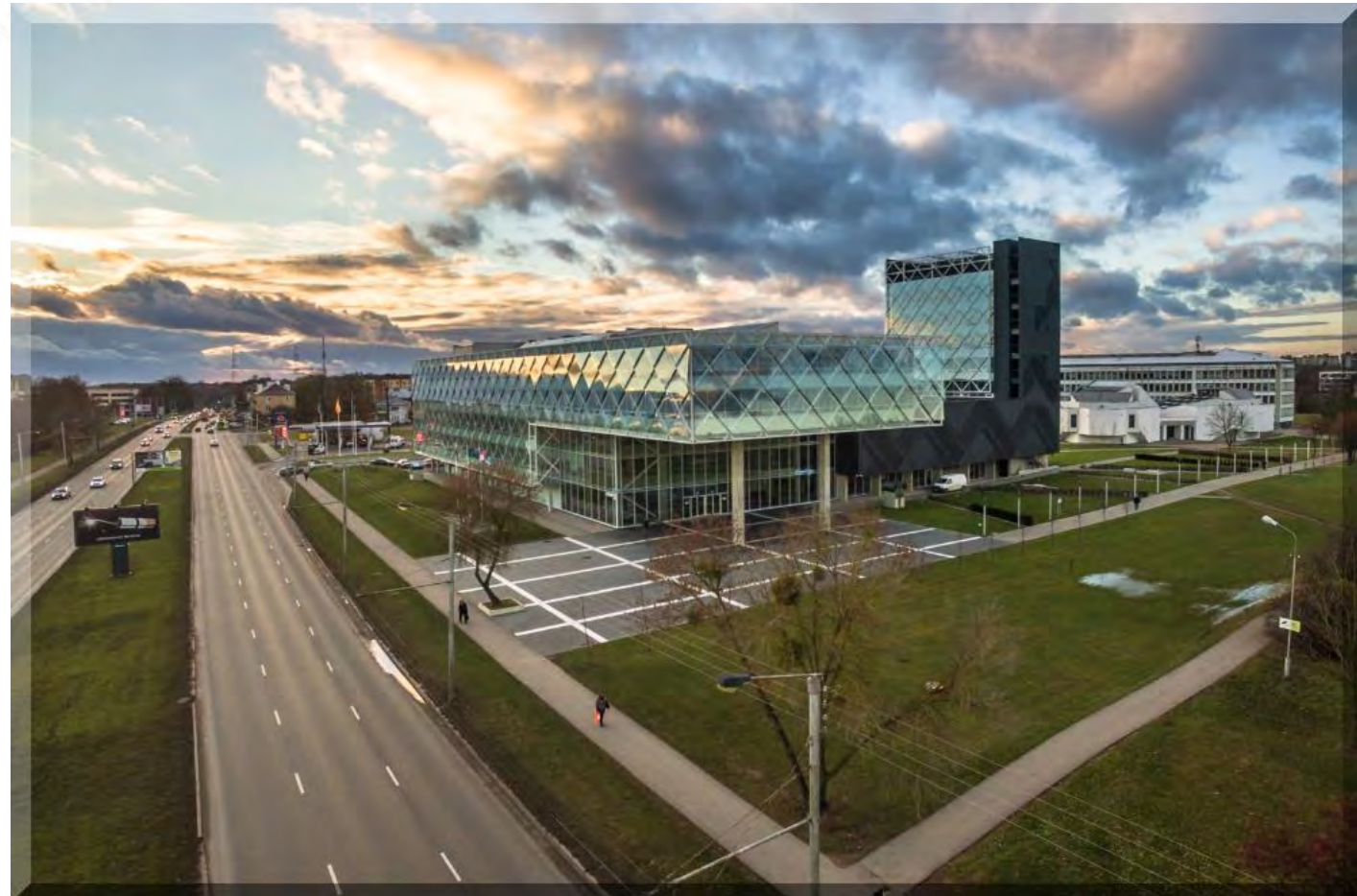
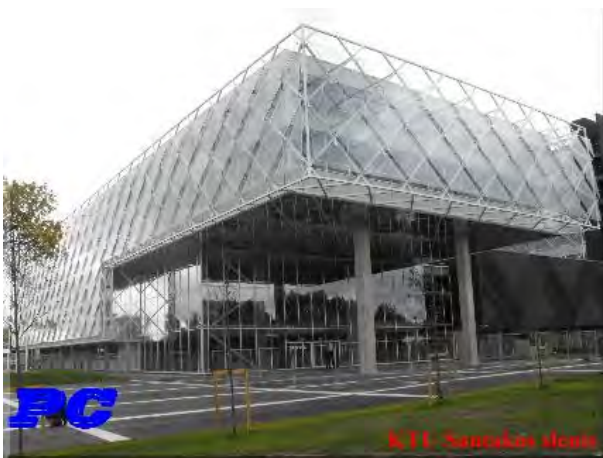
Customer: CJSC Ekoresursai
Completed operations: Technical design (2011)
Detail design (2012)

Burning fuel – biogas
Electric power generation – 12800 MWe per year
Thermal power generation – 13232 MW per year



ENGINEERING & DESIGN ACTIVITY MAIN PUBLIC BUILDINGS projects

**KTU building for studies and scientific research.
KTU Santakos slėnis. Kaunas**
Customer: Kaunas technology university
Completed operations: design of engineering parts (2010-2011)



ENGINEERING & DESIGN ACTIVITY MAIN PUBLIC BUILDINGS projects

**HOTEL “MAGNUS”, Kaunas
HOTEL-SPA “LIETUVA”, Druskininkai
PROJEKTU CENTRAS Office building
JONAVOS “ARENA”
Kinder Garden A++ class, Santariskes**



OUR MAIN CLIENTS / PARTNERS



KONCERNO „ACHEMOS GRUPĖ“ NARYS



KLAIPĖDOS UNIVERSITETAS