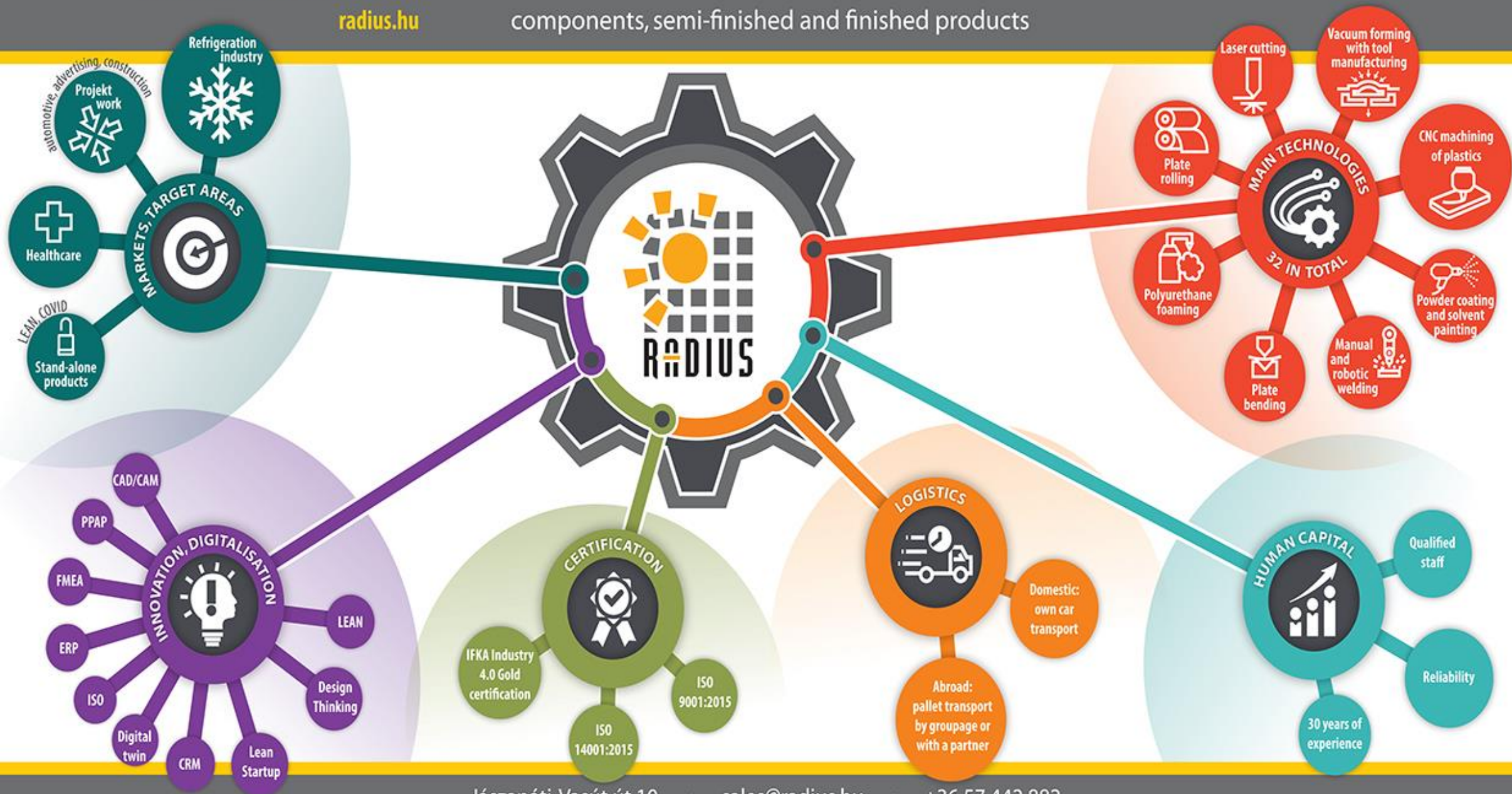


RADIUS SIGNAGE LTD: SPECIALIST IN SMALL TO MEDIUM SERIES MANUFACTURING AND TESTING

radius.hu

components, semi-finished and finished products



Markets, target areas



1. REFRIGERATION INDUSTRY

- thermal insulation frame structures with internal metal stiffeners made of 130-180 kg/m³ foam
- factory unloading trays and their parts
- refrigeration insulation foam: plastic, vacuum-formed and steel sheet elements with 38 kg/m³ of foam injected between them
- preassembled illuminated canopies
- drip trays, ventilation grilles, external covers

2. PROJECT WORK

- automotive
- advertising
- construction
- mobile home

3. HEALTHCARE

- plastic and metal covers for medical devices
- medical treatment trays, treatment seats
- frames, housings painted, labelled, pre-fitted

4. STAND-ALONE PRODUCTS

- LOTO devices
- production support equipment (racks, trolleys, information boards)
- COVID protection tools (hand disinfection column, face shield, Plexiglas walls)

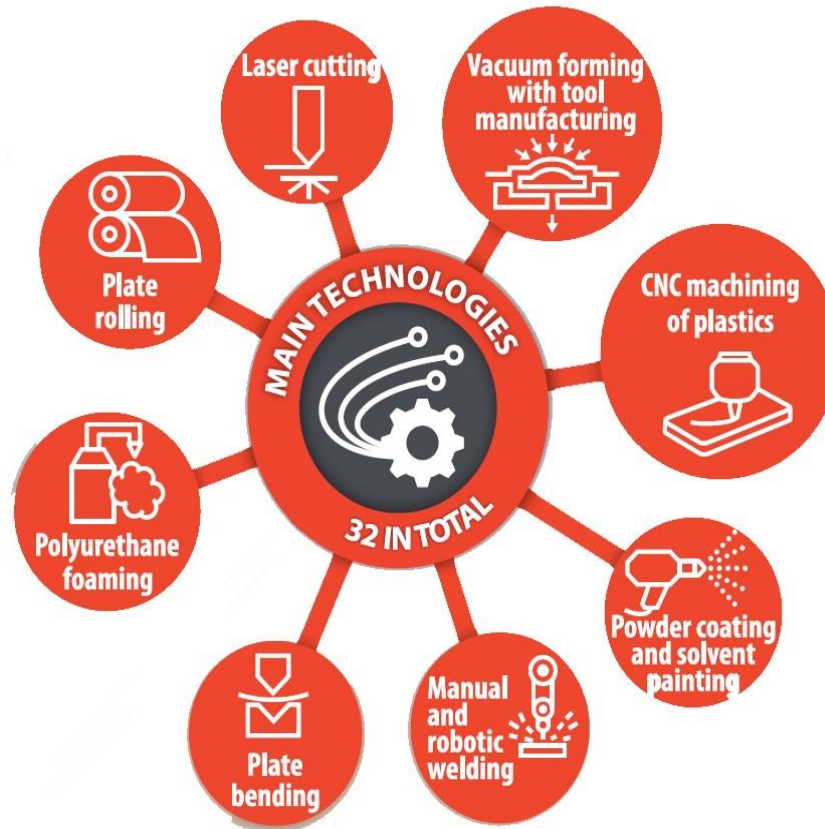


Main technologies, machinery

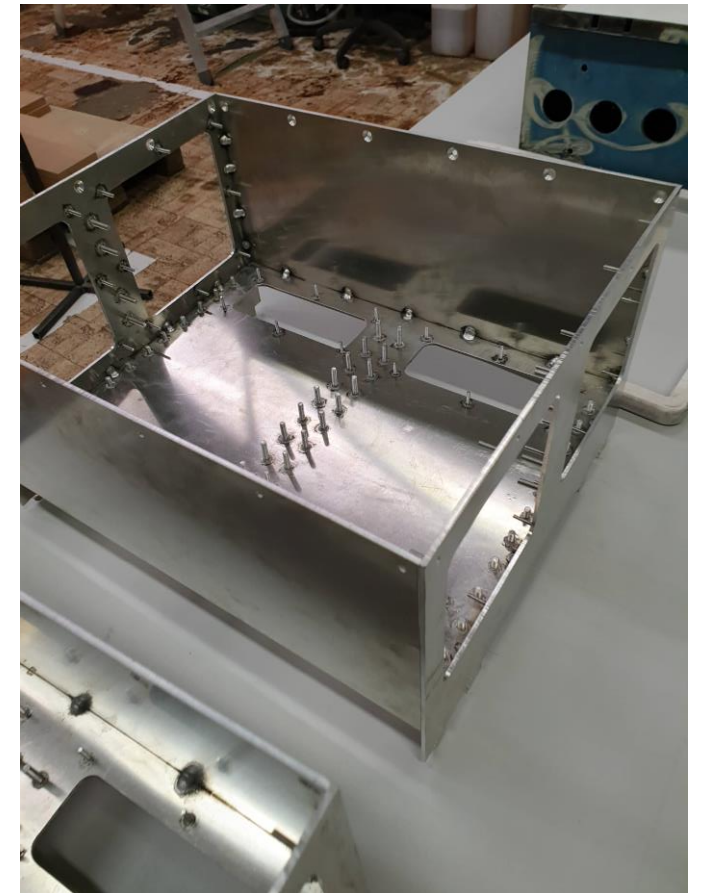
PLASTIC INDUSTRY TECHNOLOGIES



OTHER TECHNOLOGIES



METAL INDUSTRY TECHNOLOGIES



Polyurethane foaming with tool manufacturing

FOAMING MACHINE WITH A DENSITY OF 38 KG/M3

- Typically refrigerator, refrigerator side walls
- with two-component aqueous foam
- into any hollow body, into a vacuum-sucked element from 2 halves, into a steel cabinet body as insulation
- with mold release, also into shaped tools
- we undertake to place any metal inserts and stiffeners in the products



180 KG/M3 DENSITY RIGID FOAM

- We undertake to place any metal inserts and stiffeners in the product
- From this we manufacture various refrigerator counter structures and material transfer elements
- We „shoot” these products mainly into molded, tempered tools

Machines in operation: Hennecke, Cannon.

We cut, CNC mill and paint the above foams!

CNC machining of plastics

MACHINES IN OPERATION:

- 3 piece of CNC milling machines (2000 x 3000 mm)
- 1 piece of milling machines (1250 x 2500 mm)
- 1 piece of CNC lathe (2000 x 3000 mm)
- 1 piece of plastic laser cutting machine (2000 x 3000 mm)
- 1 piece of 3D milling robot

OUR RAW MATERIALS IN PLATE AND BLOCK FORM:

- PMMA (plexiglass)
- Polystyrene (HIPS)
- ABS
- Polycarbonate (solid plate, hollow chamber plate)
- PET, PET-G
- Polyethylene
- Polypropylene
- Aluminum composite (alucobond, dibond)



These are CNC milled, laser cut, cold-hot bent and vacuum formed and painted.

Vacuum forming with tool manufacturing

MACHINES IN OPERATION: GEISS, ATEM. AVAILABLE BOARD SIZES:

- **1000x1400 mm**
 - depth: 350mm
- **1750x1250 mm**
 - depth: 450 (600)
- **850x850 mm**
 - depth: 350 mm



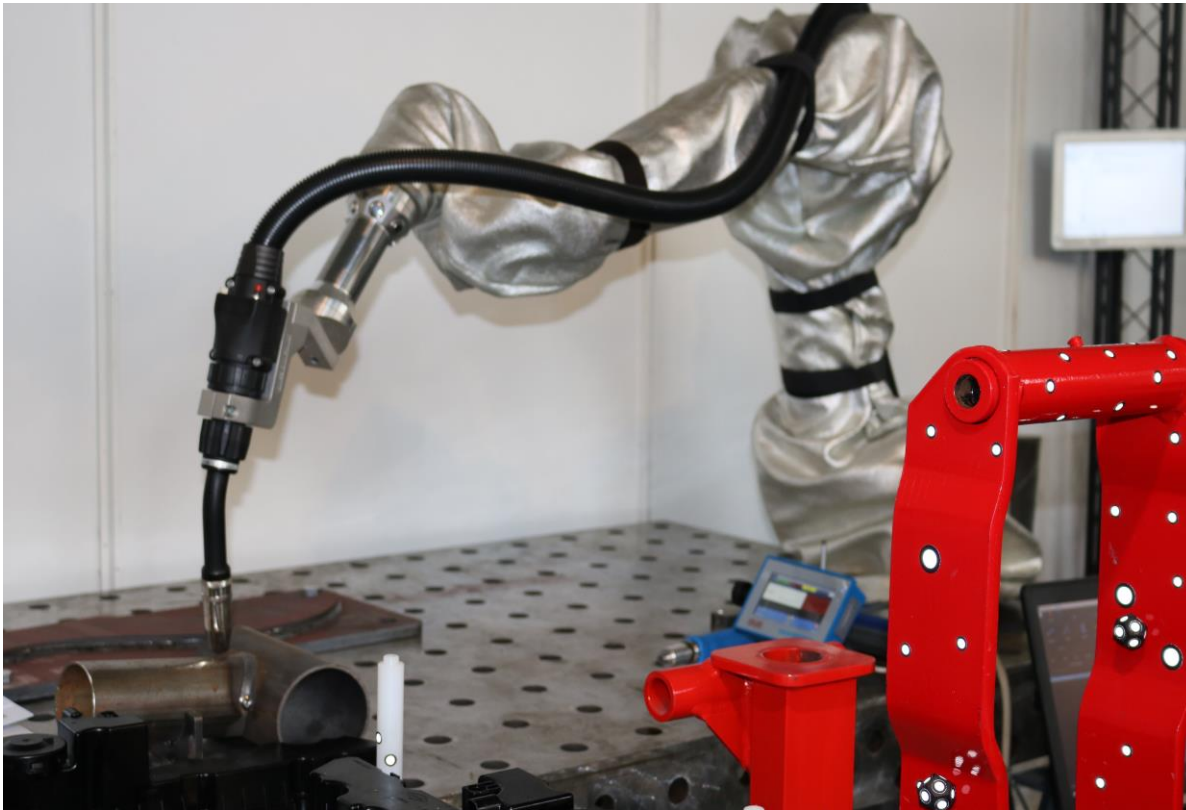
RELATED TECHNOLOGIES:

- Vacuum-formed products are machined on CNC machines.
- Production of tools from aluminum, CNC machined, resin-molded, resin-coated MDF with CNC machined solutions.
- We can paint in our factory, with our own color mixing and proper adhesion. (surface color, gloss, surface texture setting)
- Finished assembly with metal and electrical components, including testing.



Locksmith technologies (aluminum, steel, stainless)

MANUAL AND ROBOT WELDING



- manufacture of robot welding templates
- robotic welding of large frame structures
- robot welding of large lattice girders (6000*1000 mm)

MACHINES IN OPERATION:

- Rehm MegaPuls Focus 430 WS robot welder with collaborative UR robot
- Rehm Synergic Pro 220-2 combined hand welder
- Fronius Transpuls Synergic 2700 welding machine
- UR kobot laser welding machine (2kW)
- Various spot welders

ECCENTRIC AND HYDRAULIC PRESSING

- 30 ton, 50 ton eccentric press
- 15 ton hydraulic press
- 80 ton hydraulic press

Laser cutting of plate, tube and closed section materials

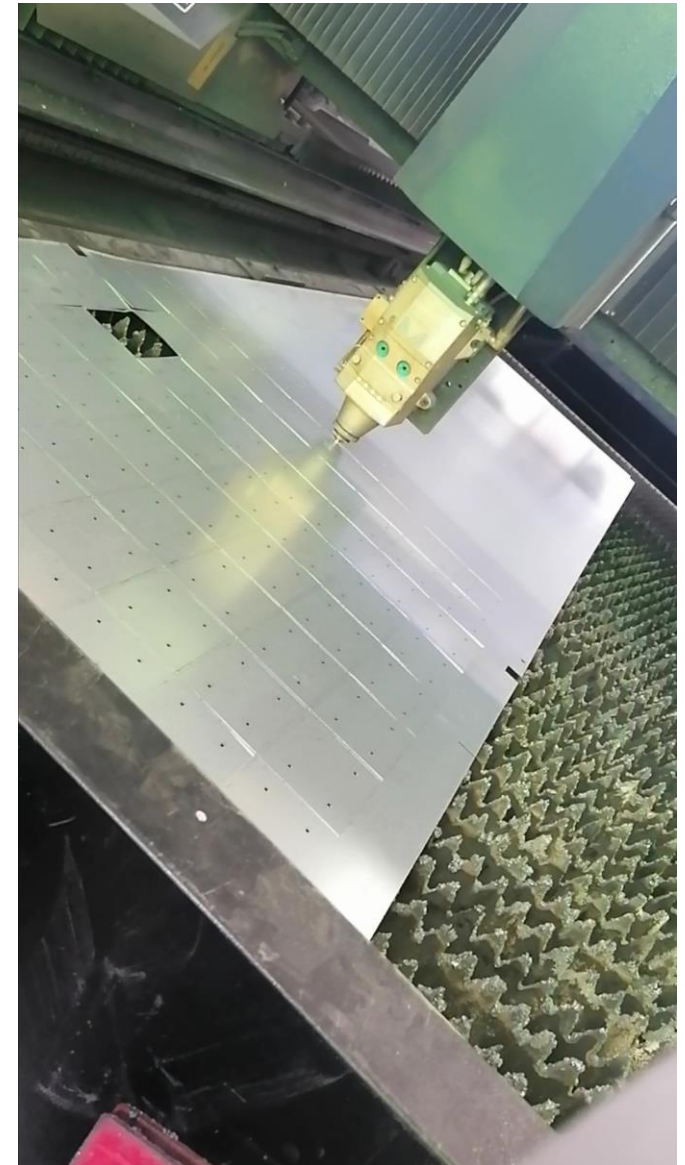
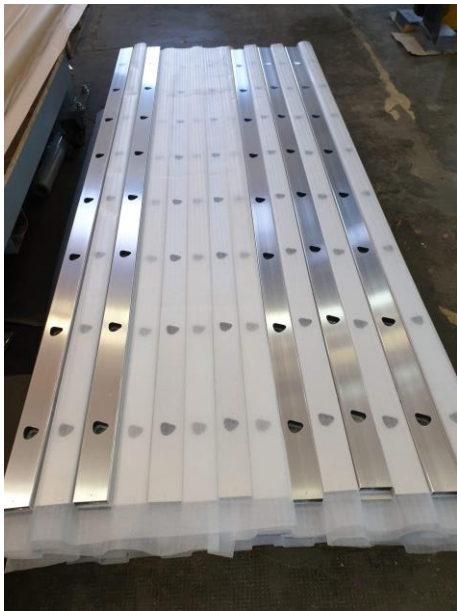
FIBER LASER CUTTING MACHINE G3015E-22Q

Plates:

- Useful workspace: 3000x1500mm, table changer type
- Cutting material thickness: carbon steel up to 20 mm, stainless steel up to 8 mm

Tube / closed section:

- Tube 20 mm – 210 mm, closed section 20x20 mm to 150x150 mm
- Cutting material thickness: : carbon steel up to 12 mm, stainless steel up to 6 mm



NC plate rolling and CNC plate bending

NC PLATE ROLLING

Biko SRL B4-2528 rolling machine

2500 mm x 12 mm



CNC PLATE BENDING (UP TO 3 MM PLATE THICKNESS)

AMADA HFE100-3 CNC plate bending machine

▪ up to 3000 mm

GLD CNC plate bending machine

▪ up to 1600 mm



ROLLING AND BENDING OF PIPES AND SECTIONS:

Rolling and bending of various sections, open / closed profiles, pipes.

Solvent painting and powder coating

SOLVENT PAINTING

With on-site custom color mixing and brightness adjustment



- painting of vacuum-molded, injection-molded plastic products with a guarantee of adhesion
- heat-resistant painting of steel and stainless steel parts, according to automotive technology
- multi-layer controlled outdoor painting on electrical cabinets and other structures
- mailboxes, boxes



ELECTROSTATIC POWDER COATING

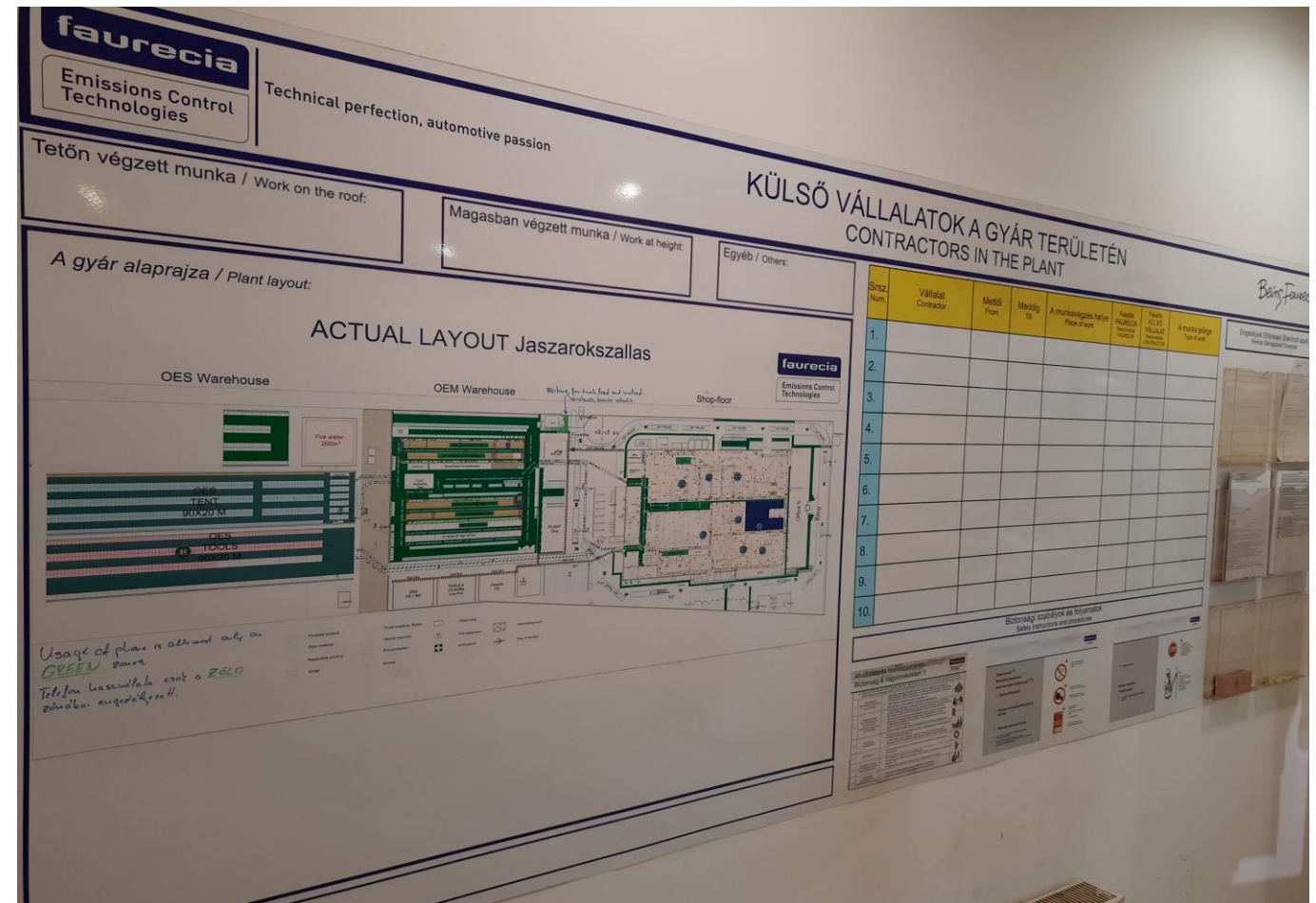
Small and large parts, structures powder coating in small and medium series

- building structures
- individual structures, machine frames
- electrical cabinets, appliances
 - maximum furnace size 1000*1200*7000 mm
- special powder coating, masking, ESD painting

Labeling technology

OUR MOST COMMONLY USED TECHNOLOGIES:

- Screen printing (textile, metal, plastic, wood)
- Solvent blowing paint template
- Labeling with powder coating
- Labeling with self-adhesive foil
- Protective foiling
- Making and gluing printed stickers



Manufacture and maintenance of gas station network price display poles and other advertising equipment



DECADES OF EXPERIENCE:

- digital price display columns in various sizes and designs connected to the central pricing system
- canopy side edge design elements combined with aluminum and plastic elements with electrical mounting
- installation of ground signs



- various design elements from metal structures to self-adhesive stickers
- Production of 4-6-8-12 meter totem poles with on-site installation and maintenance
- maintenance with own basket trolley and scaffolding equipment



What we are proud of:



ISO 9001:2015
quality management system



ISO 14001:2015
environmental management system



IFKA Ipar 4.0
Gold certification

- Our company has existed in its current form since 2011. However, its experience has been in the making **since 1990**.
- More than half of our constantly motivated and highly professional staff have been working with us for **more than 25 years**.
- **Our team of about half a hundred professionals** make even the impossible, possible.
- Our special strength is that, in addition to production, we can even solve the problems of assembling the products.
- We manufacture **more than 800 different products** in a total of **more than 300,000 pieces**.

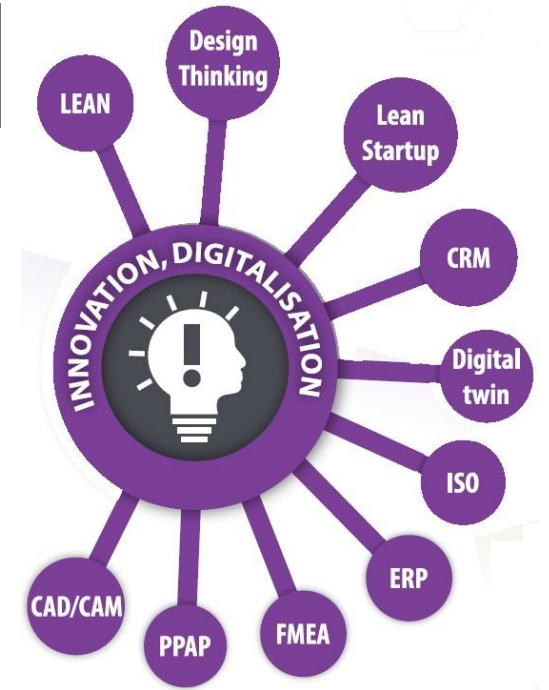


Innovation



OUR TOOLBAR BUILDS ON STATE-OF-THE-ART SOLUTIONS.

- We treat our investments as a guarantee of professionalism.
- We place great emphasis on the continuous development of our design systems.
- We always try to increase the complexity of our production with our machine purchases.



If you are looking for a reliable, experienced partner who can support you in achieving your business goals with passion and a high level of professionalism, then please feel free to contact us anytime and we will be happy to help where we can.



Work can also begin in the spring of our new 1,000 m2 hall under construction in Jászapáti.

Contact us!



sales@radius.hu



+36 57 442 882



<https://radius.hu>



<https://www.facebook.com/RadiusSignage>



<https://www.linkedin.com/company/radius-signage>